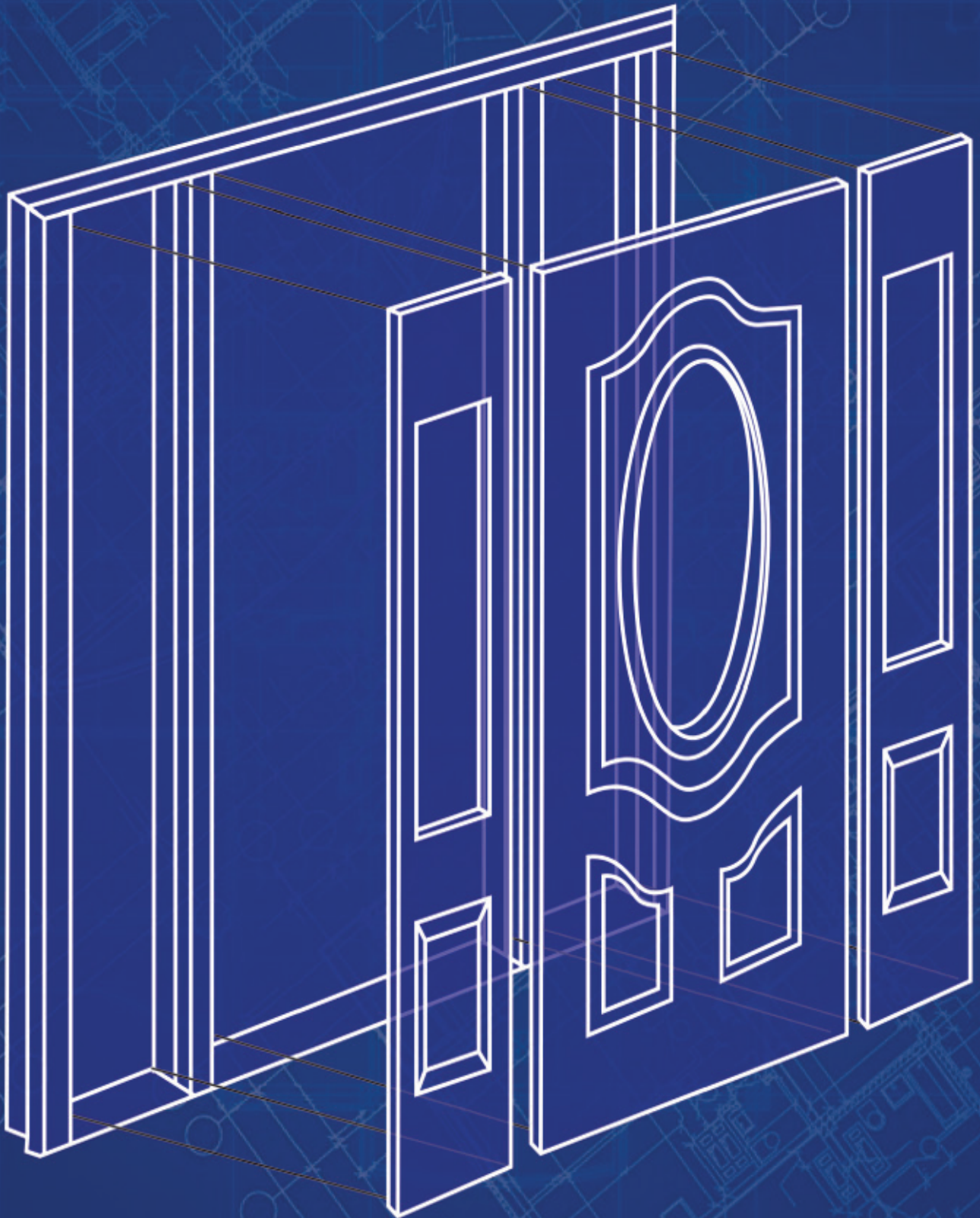
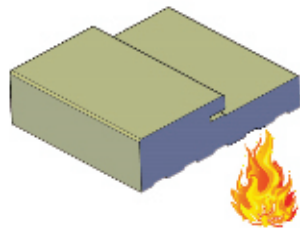


SURE JAMB



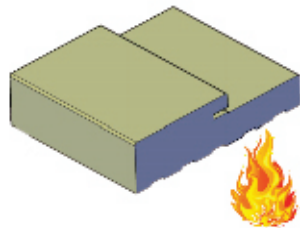
PVC Components

These products have been tested for quality and durability.



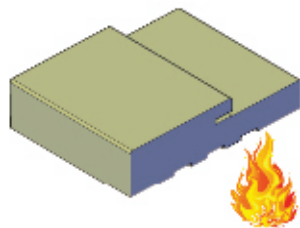
Exterior Jamb Legs — 4-9/16"

Stock #	Description	Dimensions
JM-84-PVC-WH-SM-4	4-9/16" Jamb 84" Length, Smooth White	1-1/4" x 3/4" x 4-9/16" x 84"
JM-100-PVC-WH-SM-4	4-9/16" Jamb 100" Length, Smooth White	1-1/4" x 3/4" x 4-9/16" x 100"
JM-84-PVC-UN-TX-4	4-9/16" Jamb 84" Length, Textured Tan	1-1/4" x 3/4" x 4-9/16" x 84"
JM-100-PVC-UN-TX-4	4-9/16" Jamb 100" Length, Textured Tan	1-1/4" x 3/4" x 4-9/16" x 100"



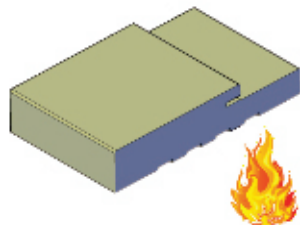
Exterior Jamb Legs — 4-7/8"

Stock #	Description	Dimensions
JM-84-PVC-WH-SM-47	4-7/8" Jamb 84" Length, Smooth White	1-1/4" x 3/4" x 4-7/8" x 84"
JM-100-PVC-WH-SM-47	4-7/8" Jamb 100" Length, Smooth White	1-1/4" x 3/4" x 4-7/8" x 100"
JM-84-PVC-UN-TX-47	4-7/8" Jamb 84" Length, Textured Tan	1-1/4" x 3/4" x 4-7/8" x 84"
JM-100-PVC-UN-TX-47	4-7/8" Jamb 100" Length, Textured Tan	1-1/4" x 3/4" x 4-7/8" x 100"



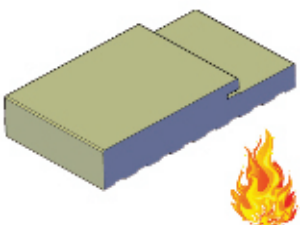
Exterior Jamb Legs — 5-1/4"

Stock #	Description	Dimensions
JM-84-PVC-WH-SM-5	5-1/4" Jamb 84" Length, Smooth White	1-1/4" x 3/4" x 5-1/4" x 84"
JM-100-PVC-WH-SM-5	5-1/4" Jamb 100" Length, Smooth White	1-1/4" x 3/4" x 5-1/4" x 100"
JM-84-PVC-UN-TX-5	5-1/4" Jamb 84" Length, Textured Tan	1-1/4" x 3/4" x 5-1/4" x 84"
JM-100-PVC-UN-TX-5	5-1/4" Jamb 100" Length, Textured Tan	1-1/4" x 3/4" x 5-1/4" x 100"



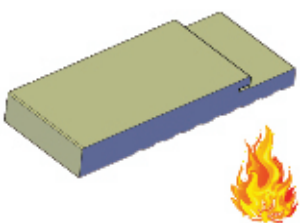
Exterior Jamb Legs — 6-9/16"

Stock #	Description	Dimensions
JM-84-PVC-WH-SM-6	6-9/16" Jamb 84" Length, Smooth White	1-1/4" x 3/4" x 6-9/16" x 84"
JM-100-PVC-WH-SM-6	6-9/16" Jamb 100" Length, Smooth White	1-1/4" x 3/4" x 6-9/16" x 100"
JM-84-PVC-UN-TX-6	6-9/16" Jamb 84" Length, Textured Tan	1-1/4" x 3/4" x 6-9/16" x 84"
JM-100-PVC-UN-TX-6	6-9/16" Jamb 100" Length, Textured Tan	1-1/4" x 3/4" x 6-9/16" x 100"



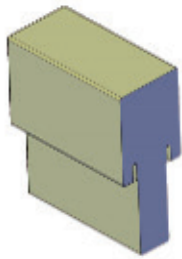
Exterior Jamb Legs — 7-1/4"

Stock #	Description	Dimensions
JM-84-PVC-WH-SM-7	7-1/4" Jamb 84" Length, Smooth White	1-1/4" x 3/4" x 7-1/4" x 84"
JM-100-PVC-WH-SM-7	7-1/4" Jamb 100" Length, Smooth White	1-1/4" x 3/4" x 7-1/4" x 100"
JM-84-PVC-UN-TX-7	7-1/4" Jamb 84" Length, Textured Tan	1-1/4" x 3/4" x 7-1/4" x 84"
JM-100-PVC-UN-TX-7	7-1/4" Jamb 100" Length, Textured Tan	1-1/4" x 3/4" x 7-1/4" x 100"



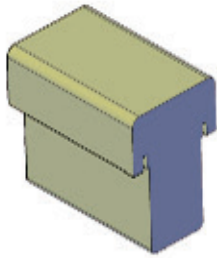
Exterior Jamb Legs — 10"

Stock #	Description	Dimensions
JM-84-PVC-WH-SM-10	10" Jamb 84" Length, Smooth White	1-1/4" x 3/4" x 10" x 84"
JM-100-PVC-WH-SM-10	10" Jamb 100" Length, Smooth White	1-1/4" x 3/4" x 10" x 100"
JM-84-PVC-UN-TX-10	10" Jamb 84" Length, Textured Tan	1-1/4" x 3/4" x 10" x 84"
JM-100-PVC-UN-TX-10	10" Jamb 100" Length, Textured Tan	1-1/4" x 3/4" x 10" x 100"



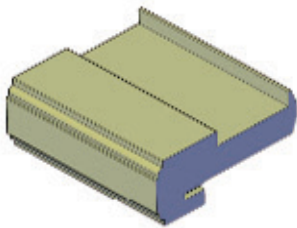
MULL POST — 4-9/16"

Stock #	Description	Dimensions
MP-84-WH-SM	84" Smooth White Color	1" x 2" x 4-9/16" x 84"
MP-84-UN-TX	84" Textured Tan	1" x 2" x 4-9/16" x 98"
MP-98-WH-SM	98" Smooth White Color	1" x 2" x 4-9/16" x 84"
MP-98-UN-TX	98" Textured Tan	1" x 2" x 4-9/16" x 98"



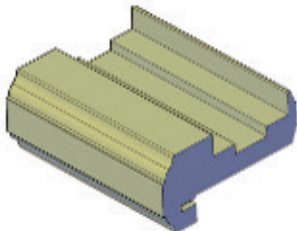
MULL POST — 4-1/16"

Stock #	Description	Dimensions
MP-84-WH-SM	84" Smooth White Color	1-1/2" x 2-1/2" x 4-1/16" x 84"
MP-84-UN-TX	84" Textured Tan	1-1/2" x 2-1/2" x 4-1/16" x 84"
MP-98-WH-SM	98" Smooth White Color	1-1/2" x 2-1/2" x 4-1/16" x 98"
MP-98-UN-TX	98" Textured Tan	1-1/2" x 2-1/2" x 4-1/16" x 98"



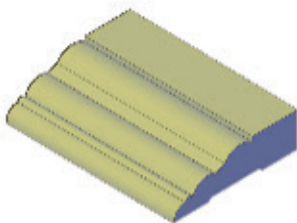
ASTRAGAL

Stock #	Description	Dimensions
TAST-84-WH-SM	84" Smooth White Color	1-3/8" x 3-1/2" x 5/8" x 84"
TAST-84-UN-TX	84" Textured Tan	1-3/8" x 3-1/2" x 5/8" x 84"
TAST-98-WH-SM	98" Smooth White Color	1-3/8" x 3-1/2" x 5/8" x 98"
TAST-98-UN-TX	98" Textured Tan	1-3/8" x 3-1/2" x 5/8" x 98"



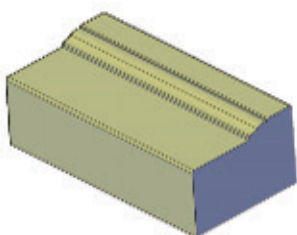
ASTRAGAL

Stock #	Description	Dimensions
TAST-84-WH-SM	84" Smooth White Color	1-7/32" x 3-7/32" x 5/8" x 84"
TAST-84-UN-TX	84" Textured Tan	1-7/32" x 3-7/32" x 5/8" x 84"
TAST-98-WH-SM	98" Smooth White Color	1-7/32" x 3-7/32" x 5/8" x 98"
TAST-98-UN-TX	98" Textured Tan	1-7/32" x 3-7/32" x 5/8" x 98"



CASING

Stock #	Description	Dimensions
CS-85-WM180-WH-SM	85" Smooth White Color	3/4" x 2-7/8" x 85"
CS-100-WM180-WH-SM	100" Smooth Color	3/4" x 2-7/8" x 100"
CS-85-WM180-UN-TX	85" Textured Tan	3/4" x 2-7/8" x 85"
CS-100-WM180-UN-TX	100" Textured Tan	3/4" x 2-7/8" x 100"

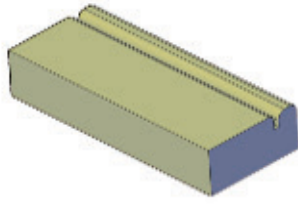


Brick Mould — 180 Profile

Stock #	Description	Dimensions
MD-85-WM180-WH-SM	85" Smooth White Color	1-1/4" x 2" x 85"
MD-100-WM180-WH-SM	100" Smooth Color	1-1/4" x 2" x 100"
MD-85-WM180-UN-TX	85" Textured Tan	1-1/4" x 2" x 85"
MD-100-WM180-UN-TX	100" Textured Tan	1-1/4" x 2" x 100"

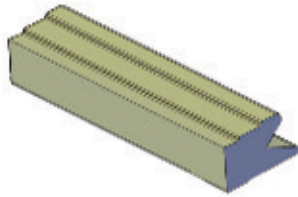
PVC Components

These products have been tested for quality and durability.



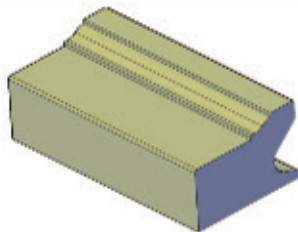
Brick Mould — 176 Profile

Stock #	Description	Dimensions
MD-85-WM176-WH-SM	85" Smooth White Color	1-1/3" x 1-5/8"
MD-100-WM176-WH-SM	100" Smooth Color	1-1/3" x 1-5/8"
MD-85-WM176-UN-TX	85" Textured Tan	1-1/3" x 1-5/8"
MD-100-WM176-UN-TX	100" Textured Tan	1-1/3" x 1-5/8"



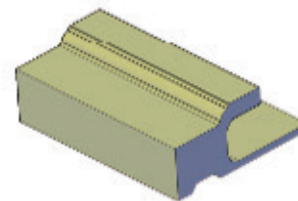
HM001

Stock #	Description	Dimensions
HM001-WH-SM	Smooth White Color	1-1/4" x 1" x 7/8"



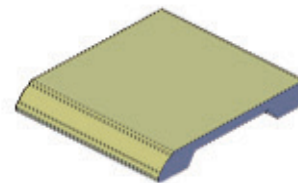
HM002

Stock #	Description	Dimensions
HM002-WH-SM	Smooth White Color	1" x 1-1/4" x 2"



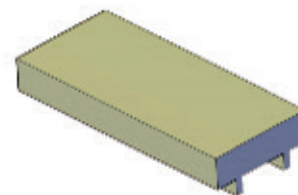
HM003

Stock #	Description	Dimensions
HM003-WH-SM	Smooth White Color	1" x 1-1/2" x 3"



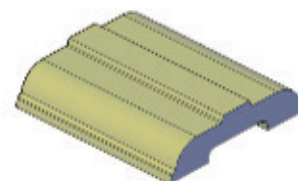
HM004

Stock #	Description	Dimensions
HM004-WH-SM	Smooth White Color	3-7/8" x 1/2"



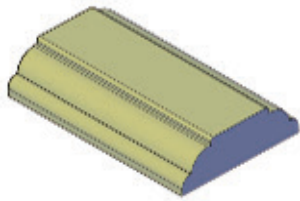
HM005

Stock #	Description	Dimensions
HM005-WH-SM	Smooth White Color	1-5/8" x 1/2"



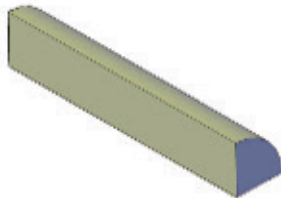
HM006

Stock #	Description	Dimensions
HM006-WH-SM	Smooth White Color	3/8" x 3-5/16"
HM006-UN-TX	Textured Tan	



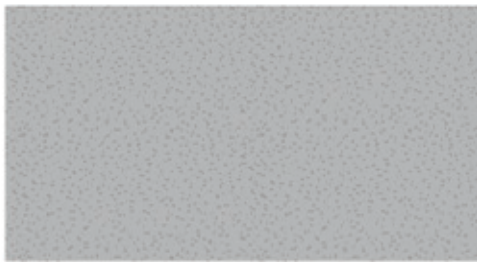
SDL BAR

Stock #	Description	Dimensions
SDL-WH-SM	Smooth White Color	3/8" x 1-1/4"
SDL-UN-TX	Textured Tan	3/8" x 1-1/4"

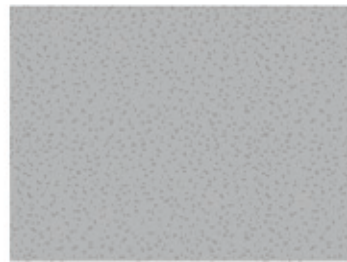


QUARTER ROUND STOP

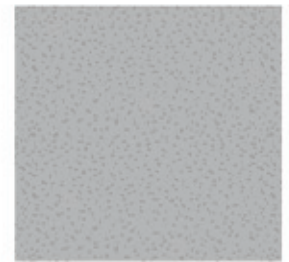
Stock #	Description	Dimensions
QR-WH-SM	Smooth White Color	3/8" x 3/8"
QR-UN-TX	Textured Tan	3/8" x 3/8"



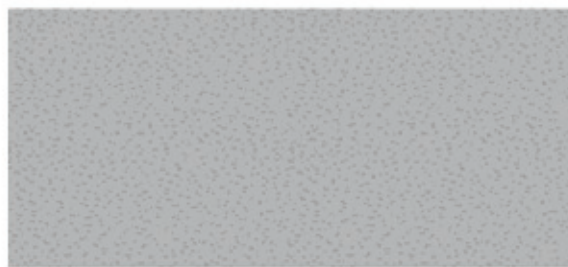
3x1 5/8



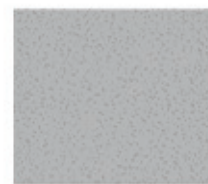
2 3/16x1 5/8



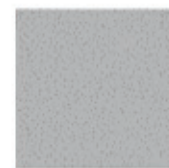
1 5/8x1 5/8



3 1/2x1 5/8



1 7/32x1 1/8



1x1



1 5/8x3/4



1 5/8x1/2



15/8x1/2



11/8x1/2



1 1/4x1/2



1 7/32x9/16

Limited Lifetime Warranty

These products have been tested for quality and durability.

LIMITED LIFETIME WARRANTY HM SureRock, Sure Jamb Frames & Components

Terms and Conditions

HM SureRock, Sure Jamb Frames & Components are guaranteed to be free of defects in material and workmanship that might unreasonably affect its performance. The terms of this Limited Lifetime Warranty extends from the first date of purchase for the life of the product.

*This warranty is for the original owner of the product and is non-transferable.

The terms of this Limited Warranty exclude failures, which are the result of or involve:

1. Accident, negligence, abuse or improper use or installed in unusual, abnormal or extreme locations or situations.
2. Stress caused by localized application of heat, movement of building or building components, or expansion/contraction of building or building components.
3. Damage caused by freight carriers, common carriers, private transportation, or any other means of transportation or handling, occurring after shipping from HM SureRock.
4. Damage to surfaces caused by fire, corrosive fumes, stains, contact with chemically abrasive substances, airborne pollutants, sanding, improper washing, extreme elements, acts of God and / or any event not controlled by HM SureRock.
5. Damage done deliberately, by negligence, abnormal working conditions, or failure to follow instructions regarding staining, painting or installations or what is considered normal wear and tear.
6. Custom surface finishes or alternations applied to product(s) in the field.
7. Improper or insufficient handling, storage, installation, maintenance, or service.
8. All components, parts, and labor supplied by parties other than HM SureRock or its agents.

HM SureRock, Inc. warrants the Sure Jamb Product(s) free of defects in materials and workmanship and free of rot and decay during the warranty period for reasons covered by this warranty.

If the **Sure Jamb** Product that is the subject of this Limited Lifetime warranty fails during the warrant period for reasons covered by the Limited Lifetime Warranty and the original purchaser submits the written service request required under this Limited Lifetime Warranty HM SureRock will:

REPLACE THE SUREJAMB FRAME PRODUCT WITH A PRODUCT THAT IS FUNCTIONALLY AT LEAST EQUAL TO THE SUREJAMB FRAME PRODUCT BEING REPLACED OR PROVIDE IN U.S. DOLLARS THE VALUE OF THE FRAME AS LISTED ON THE HM SUREJAMB SURE JAMB COMPONENTS PRICE LIST AT THE TIME OF FAILURE.

Warranty Claim Procedures -- To place a warranty claim, purchaser shall notify the Corporate Office of HM SureRock Inc. by providing the following information presented in writing:

1. Product ID and description of the Frame;
2. Proof of purchase (invoice and delivery ticket provided by SureRock, Inc.); and
3. Detailed description of defect(s).
4. A copy of this Limited Lifetime Warranty

Claimed defective **Sure Jamb** frames may be inspected by a HM SureRock, Inc. representative, and customer must permit the inspection when requested by HM SureRock., or any claims shall be deemed waived. All disputes regarding this Limited Lifetime Warranty will be exclusive venue and jurisdiction in the State of California.

When a defect occurs, in conformity to the warranty terms set above, HM SureRock, Inc. agrees to either replace the Frame or refund the original purchase price at HM SureRock election. In the event HM SureRock, Inc. elects to provide a replacement, the Limited Warranty of the replacement will extend only for the balance of the original Warranty period. In no event shall HM SureRock be responsible for costs and any charges involving the shipping, finishing and installation of the replacement Sure Jamb Frame.

HM SureRock will perform its obligations under the Warranty within thirty (30) days after receipt of appropriate notice, inspection and confirmation of the existence of defect.

HM SureRock will not be liable for any Frames repaired or replaced without its prior written consent.

The remedies set forth herein are the original purchaser's exclusive remedies for breach of Warranty. In no case shall HM SureRock be liable for any general, incidental or consequential damages. There are no other Warranties except as set forth herein.

*HM SureRock reserves the right to modify the conditions and restrictions of this Warranty without prior notice
Info@surerock.us * 15759 Tapia Street, Irwindale, CA 91706



SURE JAMB

PVC/COMPOSITE EXTERIOR DOOR FRAMES & COMPONENTS

- LIFETIME ~~NO ROT~~ & MAINTENANCE FREE
- MOISTURE & TERMITE PROOF MATERIAL
- AVAILABLE IN SMOOTH WHITE & TEXTURED TAN WOOD GRAIN
- MACHINES, MORTISES LIKE WOOD, NO SPECIAL EQUIPMENT NEEDED
- Approved for **HVHZ**

20 mins Fire-Rated Available NO. # 0651

TEST CHARACTERISTICS	TEST METHODS	RESULTS
RATE OF BURN TEST	ASTM D635 – 06	PRODUCT MEETS CLASSIFICATION OF C-1
IGNITION TEMPERATURE TEST	ASTM D1929 – 96(2000)E01	359.3 C 678.7F
ACCELERATED WEATHERING TEST	ASTM G155	MEETS HVHZ REQUIREMENTS
SMOKE DENSITY TEST	ASTM D2843 – 99(2004)E01	(SDR) 39.6%
OPERATION/CYCLE SLAM TEST	AAMA 920	25,000 CYCLES - PASS
FASTENER WITHDRAWAL	ASTM D1761	215
FLEXURAL PROPERTIES	ASTM D6109	1200
HINGE LOADING	WDMA TM 8	307

Architectural Testing - B8026.01-301-44 (www.archtest.com) Structural Test

This product has been evaluated and is in compliance with the 5th edition (2014) Florida Building Code (FBC) structural requirements. Product approval code 18385.1 (see floridabuilding.org)



Sales: Info@SureRock.US
Website: www.SureRock.US
3.18