



Sales: Info@SureRock.US
Website: www.SureRock.US
3.17

STOCKING PROGRAM





FM280D
Shown as Classic

Slab Size:
35-1/2" x 78-1/2"

Unit Size:
37-1/4" x 81"

Jamb Option:
4-9/16", 5-1/4"

Available Finish:
DW MW MH WH CS



FM800A
Shown as Dark Walnut

Slab Size:
35-1/2" x 78-1/2"

Unit Size:
37-1/4" x 81"

Jamb Option:
4-9/16", 5-1/4"

Available Finish:
DW MW MH CS



FM200I
Shown as Dark Walnut

Slab Size:
35-1/2" x 78-1/2"

Unit Size:
37-1/4" x 81"

Jamb Option:
4-9/16", 5-1/4"

Available Finish:
DW MW MH CS



FO301A
Shown as Oak

Slab Size:
35-1/2" x 78-1/2"

Unit Size:
37-1/4" x 81"

Jamb Option:
4-9/16", 5-1/4"

Available Finish:
OK



FM285B
Shown as Mahogany

Slab Size:
35-1/2" x 78-1/2"

Unit Size:
37-1/4" x 81"

Jamb Option:
4-9/16", 5-1/4"

Available Finish:
DW MW MH WH



FM300A
Shown as Dark Walnut

Slab Size:
35-1/2" x 78-1/2"

Unit Size:
37-1/4" x 81"

Jamb Option:
4-9/16", 5-1/4"

Available Finish:
DW MW CS



FM200PP



with Clovos

FM200W
Shown as Classic

Slab Size: 35-1/2" x 78-1/2"
Unit Size: 37-1/4" x 81"

Jamb Option: 4-9/16", 5-1/4"

Available Finish:
DW MW CS

Color Chart

Dark Walnut = DW

Medium Walnut = MW

Mahogany = MH

White = WH

Classic = CS

Oak = OK



FM280D Shown as Mahogany

Unit Size: 63-1/2" x 81"

Jamb Option: 4-9/16", 5-1/4"

Available Finish: ☐ DW ☐ MW ☐ MH

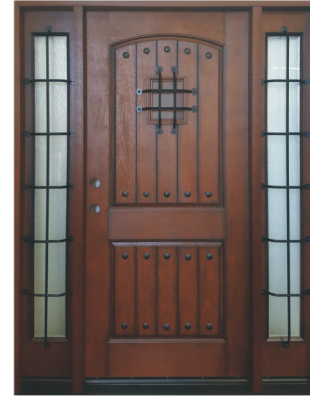


FM800A Shown as Dark Walnut

Unit Size: 63-1/2" x 81"

Jamb Option: 4-9/16", 5-1/4"

Available Finish: ☐ DW ☐ MW ☐ MH



FM200W Shown as Classic

Unit Size: 63-1/2" x 81"

Jamb Option: 4-9/16", 5-1/4"

Available Finish: ☐ DW ☐ MW ☐ CS

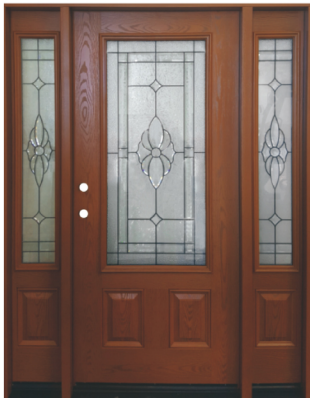


FM200I Shown as Dark Walnut

Unit Size: 63-1/2" x 81"

Jamb Option: 4-9/16", 5-1/4"

Available Finish: ☐ DW ☐ MW



FO301A Shown as Oak

Unit Size: 63-1/2" x 81"

Jamb Option: 4-9/16", 5-1/4"

Available Finish: ☐ OK



FM300A Shown as Medium Walnut

Unit Size: 63-1/2" x 81"

Jamb Option: 4-9/16", 5-1/4"

Available Finish: ☐ DW ☐ MW



FM300AM Shown as Dark Walnut

Unit Size: 63-1/2" x 81"

Jamb Option: 4-9/16", 5-1/4"

Available Finish: ☐ DW ☐ MW



FO100 Shown as White

Unit Size: 59-1/2" x 79-1/2", 71-1/2" x 79-1/2"

Jamb Option: 4-9/16", 5-1/4"

Available Finish: ☐ DW ☐ MW ☐ MH ☐ WH

COMPLETE NON-ROT SYSTEM

Composite Jamb-Finished to Match



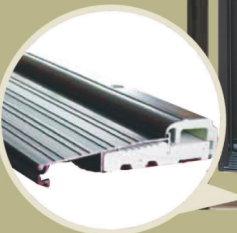
High Denition Panel Embossment



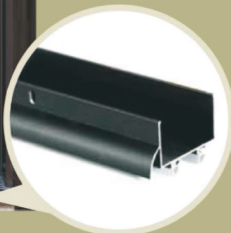
Composite Casing & Brick Molding Finished to Match



Heavy Duty Ball Bearing Hinge



Composite Adjustable Threshold



Aluminum Door Shoes with Drip Cap



Entry Door System 20-Year Limited Warranty

Door Slab	Factory Installed Glass	Duration	
		Factory Finish	Jamb & Accessories
*Limited 20 yrs	5 yrs - decorative glass 5 yrs - clear glass	2 yrs	1 yr

Warranty Coverage:

Subject to the limitations, exceptions and exclusions contained in this document, HM Group USA warrants to the original purchaser of its entry door systems that, from the date of purchase through the durations specified above, the various parts of the system will be free of defects in materials and workmanship.

*Limitations: This limited warranty: (a) is not transferable; (b) does not apply to purchases made for resale or for use outside of the United States.

Warranty Claim Process:

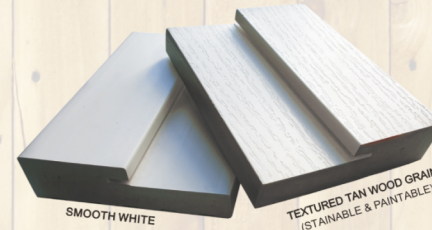
In the event there is a defect covered by the warranty, Customer must follow this warranty claim process.

1. All warranty claims must be submitted to HM Group, USA stating the claimed deficiency.
2. The claim must include the following information:
 - a. Description of the defect and picture if possible.
 - b. Model and type of product that is being described in the claim.
 - c. Proof of purchase
3. HM Group USA, may request to have a representative inspect the claimed defective door, in which they will have 30 days to do so from the date of the Customer's written claim if they choose to do so.

Note: See full Warranty online Surerock.us

SURE JAMB

PVC EXTERIOR DOOR FRAMES & COMPONENTS



LIFETIME **NO-ROT** & MAINTENANCE FREE
 MOISTURE & TERMITE PROOF MATERIAL
 AVAILABLE IN SMOOTH WHITE & TEXTURED TAN WOOD GRAIN
 MACHINES, MORTISES LIKE WOOD, NO SPECIAL EQUIPMENT NEEDED

Approved for **DMVHZ**

Available in 4-9/16", 5-1/4", 6-9/16" Other Sizes Coming Soon



This product has been evaluated and is in compliance with the 5th edition (2014) Florida Building Code (FBC) structural requirements. Product approval code 18385.1 (see floridabuilding.org)